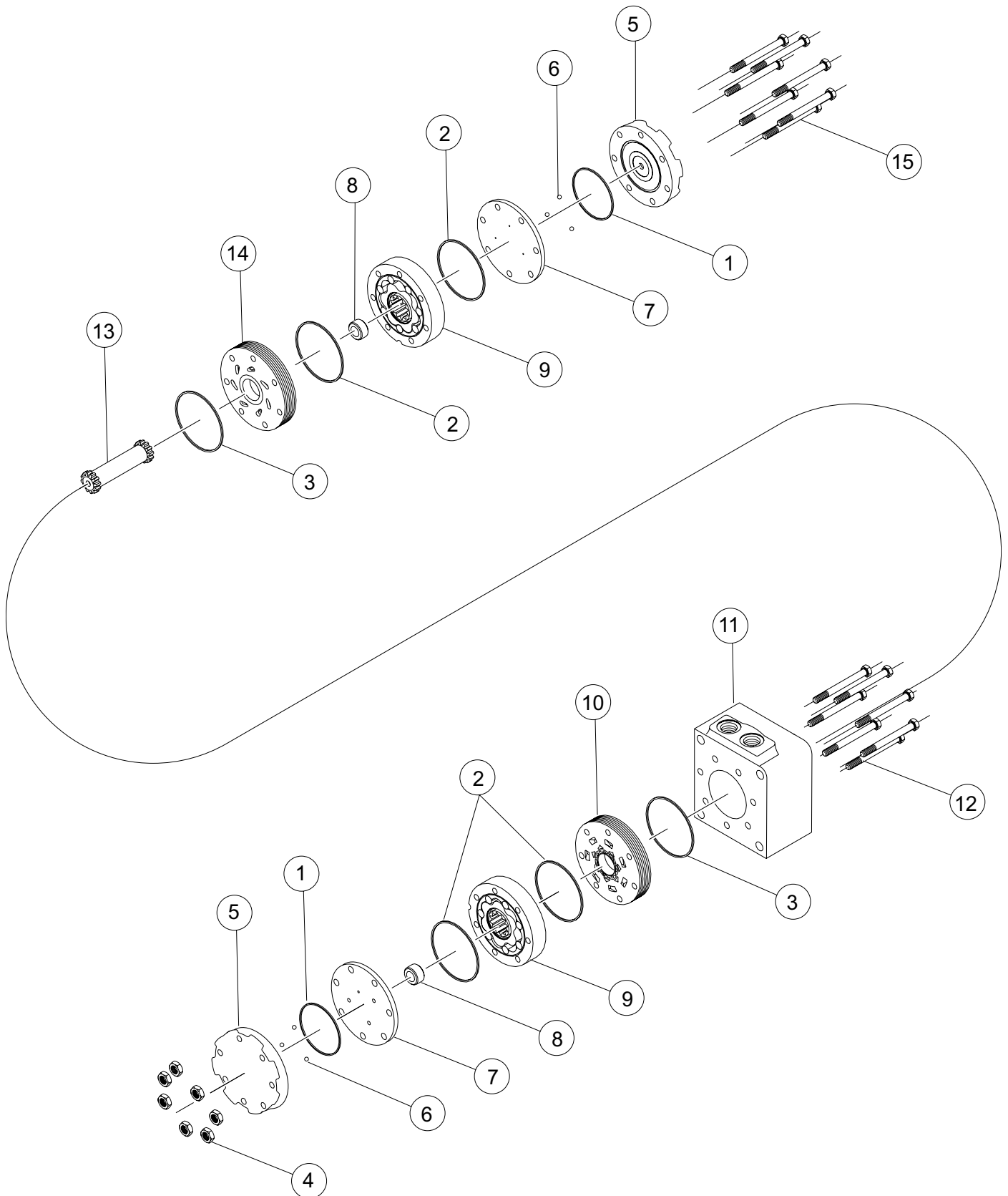


# FD (950) Series



# FD (950) SERIES MOTOR COMPONENTS

## SEAL KIT 950777000

DESCRIPTION	EXP. VIEW ITEM #	KIT
ENDCOVER SEALS (2)	1	ITEMS # 1-3
BODY SEALS (4)	2	INCLUDED IN
HOUSING SEALS (2)	3	SEAL KIT
		950777000

## MISCELLANEOUS KITS

DESCRIPTION	EXP. VIEW ITEM #	KIT
NUTS (7)	4	950018000
ENDCOVER	5	500016001
STEEL BALL	6	500018048
BALANCE PLATE (3 BALLS INCLUDED)	6-7	500012001
FORWARD MANIFOLD	10	500015006
PORTED DIVIDER PLATE	11	700012001
REVERSE MANIFOLD	14	500015007

## DRIVE LINKS

(EXPLODED VIEW ITEM #13)

LOCATE YOUR MODEL NUMBER IN THE LISTINGS TO DETERMINE WHICH DRIVE LINK TO USE.

MODEL NUMBER	DRIVE LINK KIT
950320M8699AAAAA	ALL MODEL NUMBERS AT
950600M8699AAAAA	LEFT USE DRIVE LINK
	700014002

## ROTORS, SPACERS, AND BOLTS

EXPLODED VIEW ITEM #	9	8	12	15
DESCRIPTION	ROTOR KIT	SPACER KIT	SOCKET HEAD CAPSCREW KIT	HEX HEAD CAPSCREW KIT
160	500137005	---	700018004	500445006
300	500247005	*** SEE NOTE BELOW	700018042	500445018
375	500307005	500018109	700018006	500445024

\*\*\*NOTE - FOR THE 300 DISPLACEMENT, (1) 500018075 AND (1) 500018076 SPACER IS REQUIRED.